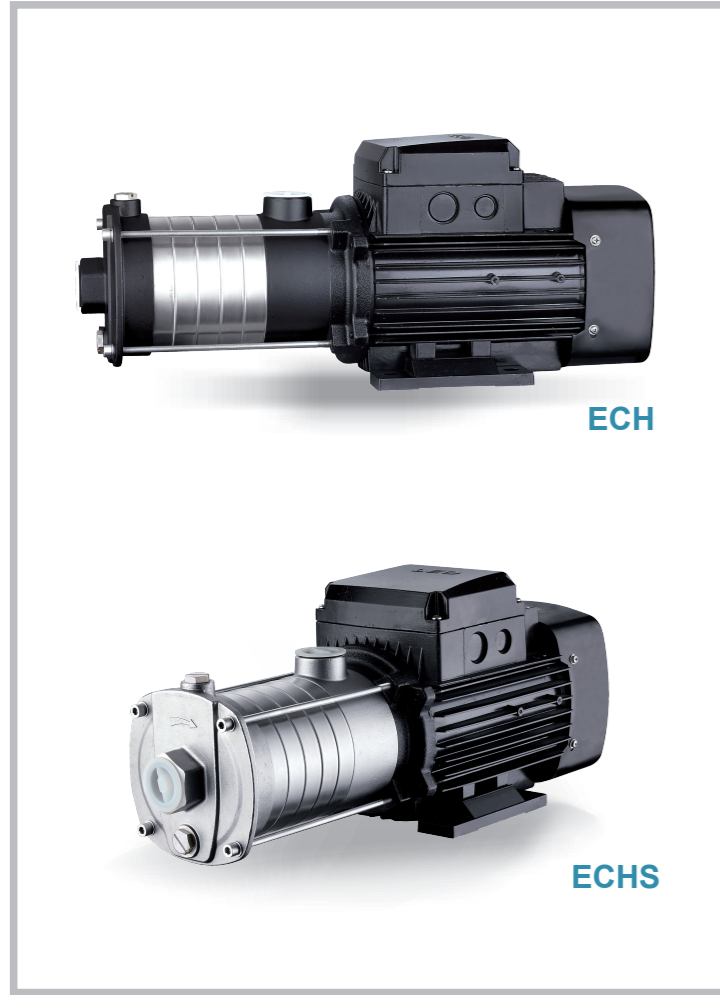


ECH

Stainless Steel Horizontal Multistage Pump



Application

- It is applicable to household water supply, equipment support, pipeline pressurization, garden watering, vegetable greenhouse watering, fish farming and poultry raising, industrial and mining, water supply and drainage of enterprises and high-rise buildings, central air conditioner and centralized heating circulation system, etc.

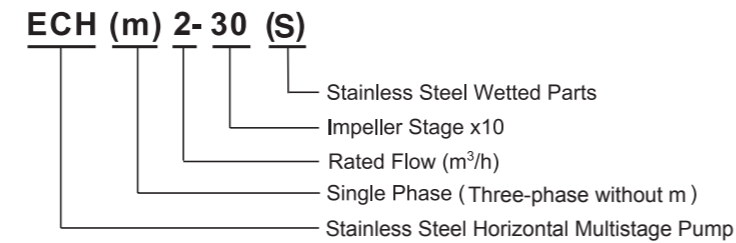
Pump

- AISI 304 shaft
- Max. liquid temperature: +85°C
- Altitude: up to 1000 m
- Max. suction: 8 m
- Max. inlet pressure: limited by max. operating pressure
- Max. operation pressure: 10 bar
- Liquid PH valve: 4 - 10

Motor

- Motor with copper winding
- Built-in thermal protector for single phase motor
- Insulation class: F
- Protection class: IP55
- Max. ambient temperature: +40°C

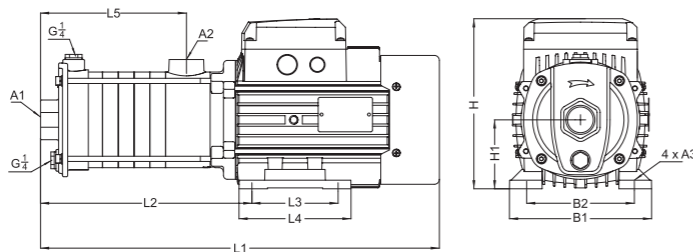
Identification Codes



Technical Data

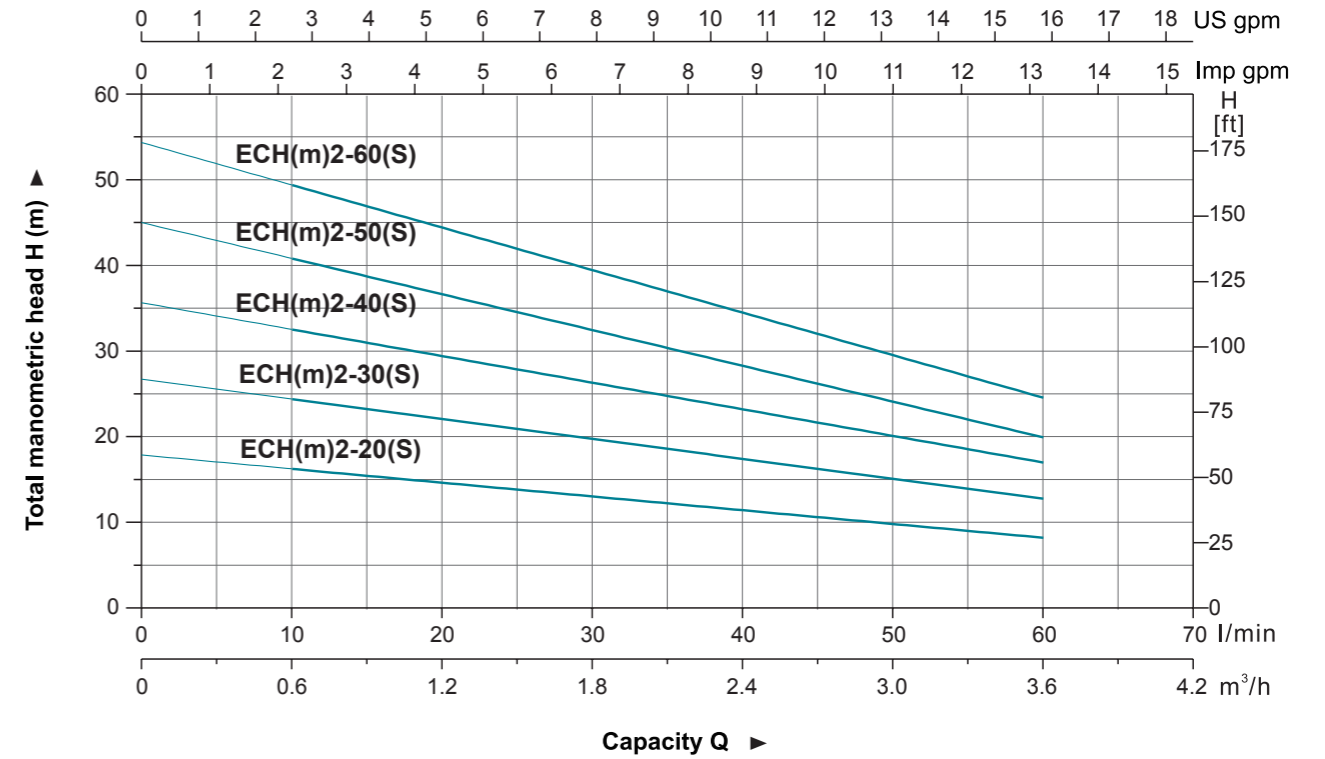
Model	Power		Q (m ³ /h) Q (l/min)	0.6	1.2	1.8	2.4	3.0	3.6
	kW	HP		H (m)					
ECH(m)2-20(S)	0.37	0.5	10	16	15	13	12	10	8
ECH(m)2-30(S)	0.37	0.5	20	24	22	20	18	16	12
ECH(m)2-40(S)	0.55	0.75	30	33	30	26	24	21	16
ECH(m)2-50(S)	0.55	0.75	40	40	37	33	30	24	19
ECH(m)2-60(S)	0.75	1.0	50	50	45	40	36	30	23

Dimension



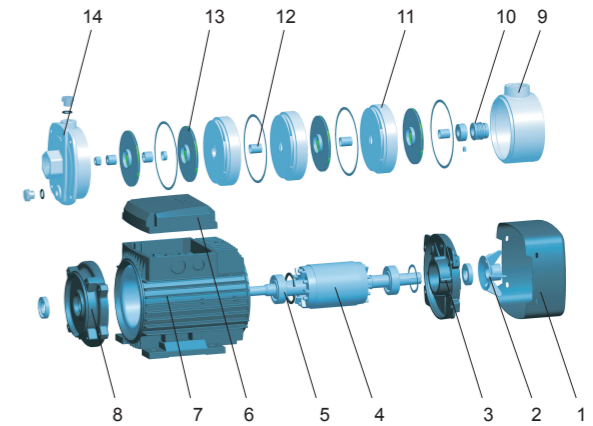
Model	L1	L2	L3	L4	L5	B1	B2	H	H1	A1	A2	A3
ECH(m)2-20(S)	344.5	165.5	90	110	98.5	137	109	176.5	71	G1	G1	Φ7
ECH(m)2-30(S)	362.5	183.5	90	110	116.5	137	109	176.5	71	G1	G1	Φ7
ECH(m)2-40(S)	380.5	201.5	90	100	134.5	137	109	176.5	71	G1	G1	Φ7
ECH(m)2-50(S)	399.5	220.5	90	110	153.5	137	109	176.5	71	G1	G1	Φ7
ECH(m)2-60(S)	417.5	238.5	90	110	171.5	137	109	176.5	71	G1	G1	Φ7

Hydraulic Performance Curves



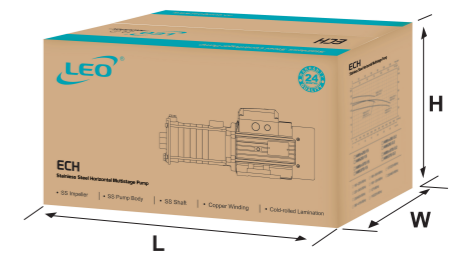
Materials Table

No.	Part	Material
1	Fan cover	08F
2	Fan	PP
3	Rear cover	ZL 102
4	Rotor	
5	Bearing	
6	Terminal box	ZL 102
7	Stator	
8	Front cover	Cast iron
9	Outlet body	Cast iron/AISI 304
10	Mechanical seal	Carbon/Ceramic
11	Diffuser	AISI 304
12	Sleeve	AISI 304
13	Impeller	AISI 304
14	Pump body	Cast iron/AISI 304



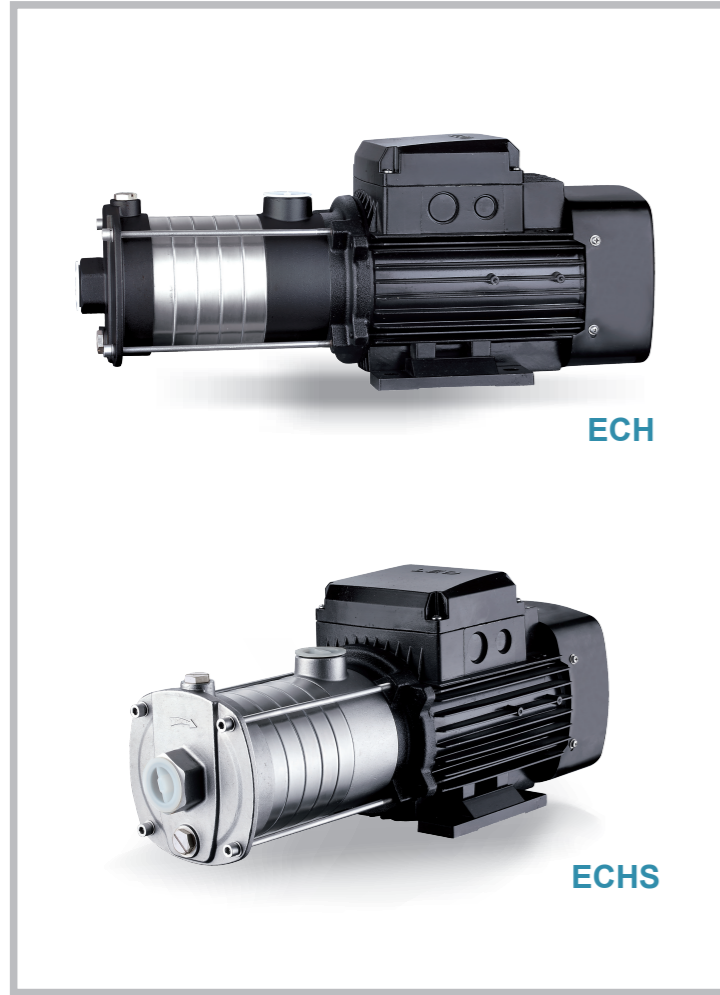
Package Information

Model	GW (Kgs)	L (mm)	W (mm)	H (mm)	Quantity (PCS/20 TEU)
ECH(m)2-20(S)	11.5	420	215	243	1215
ECH(m)2-30(S)	11.8	420	215	243	1215
ECH(m)2-40(S)	13.2	420	215	243	1215
ECH(m)2-50(S)	13.7	455	215	243	1170
ECH(m)2-60(S)	14.6	455	215	243	1170



ECH

Stainless Steel Horizontal Multistage Pump



Application

- It is applicable to household water supply, equipment support, pipeline pressurization, garden watering, vegetable greenhouse watering, fish farming and poultry raising, industrial and mining, water supply and drainage of enterprises and high-rise buildings, central air conditioner and centralized heating circulation system, etc.

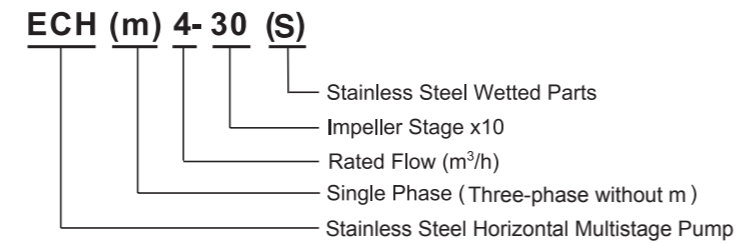
Pump

- AISI 304 shaft
- Max. liquid temperature: +85°C
- Altitude: up to 1000 m
- Max. suction: 8 m
- Max. inlet pressure: limited by max. operating pressure
- Max. operation pressure: 10 bar
- Liquid PH valve: 4 - 10

Motor

- Motor with copper winding
- Built-in thermal protector for single phase motor
- Insulation class: F
- Protection class: IP55
- Max. ambient temperature: +40°C

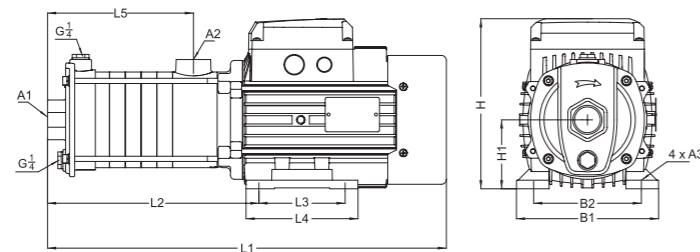
Identification Codes



Technical Data

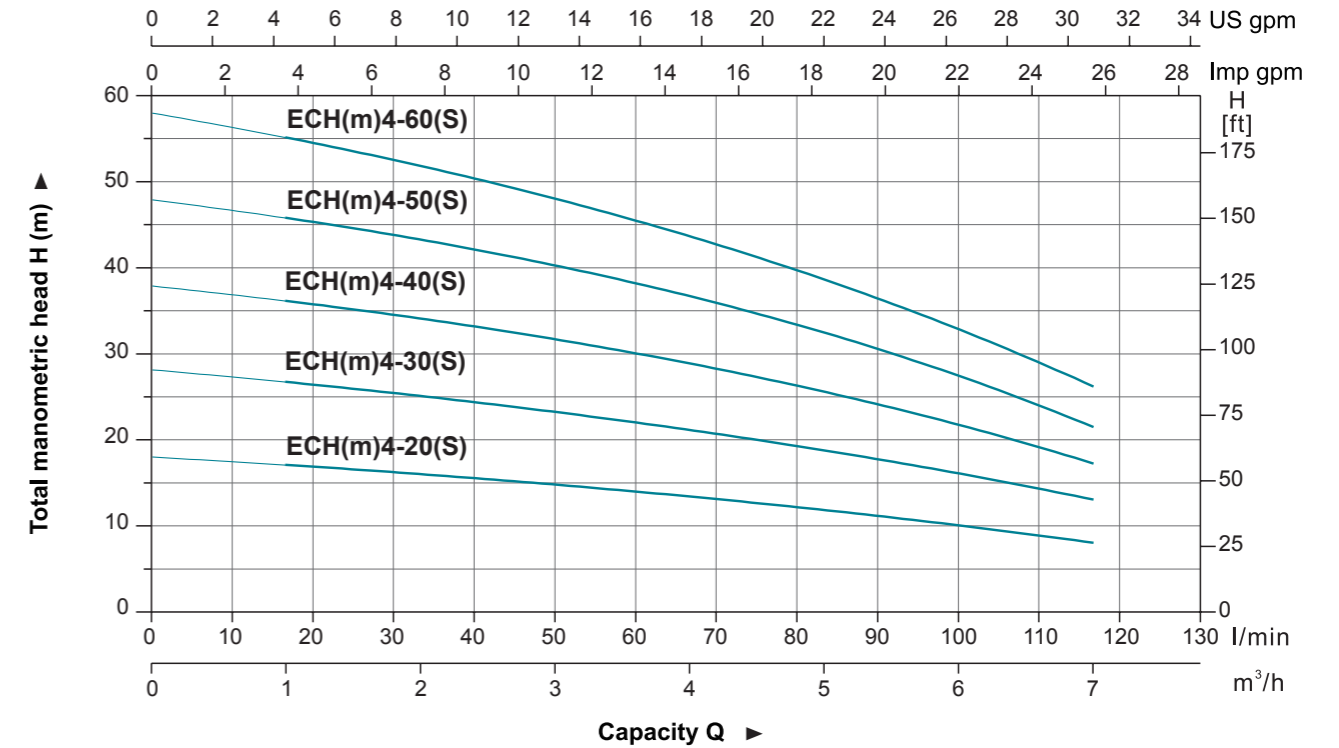
Model	Power		Q (m ³ /h) Q (l/min)	1	2	3	4	5	6	7
	kW	HP		H (m)	17	33	50	67	83	100
ECH(m)4-20(S)	0.55	0.75	H (m)	17	16	15	13	12	10	8
ECH(m)4-30(S)	0.55	0.75		27	25	23	21	19	16	13
ECH(m)4-40(S)	0.75	1.0		36	34	32	28	26	22	17
ECH(m)4-50(S)	1.1	1.5		46	43	40	36	33	28	21
ECH(m)4-60(S)	1.1	1.5		55	52	48	43	39	33	26

Dimension



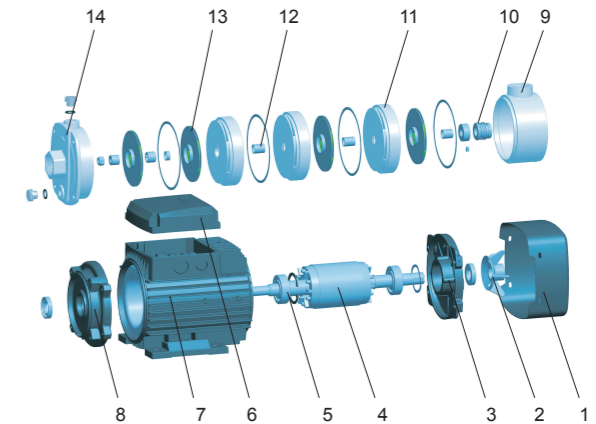
Model	L1	L2	L3	L4	L5	B1	B2	H	H1	A1	A2	A3
ECH(m)4-20(S)	354	175.5	90	110	108.5	137	109	176.5	71	G1 ¹ / ₄	G1	Φ7
ECH(m)4-30(S)	381.5	203	90	110	136	137	109	176.5	71	G1 ¹ / ₄	G1	Φ7
ECH(m)4-40(S)	408.5	230	90	110	163	137	109	176.5	71	G1 ¹ / ₄	G1	Φ7
ECH(m)4-50(S)	484	266	100	130	190	165	125	204.5	80	G1 ¹ / ₄	G1	Φ10
ECH(m)4-60(S)	511.5	293.5	100	130	217.5	165	125	204.5	80	G1 ¹ / ₄	G1	Φ10

Hydraulic Performance Curves



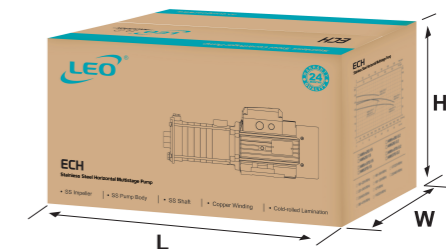
Materials Table

No.	Part	Material
1	Fan cover	08F
2	Fan	PP
3	Rear cover	ZL 102
4	Rotor	
5	Bearing	
6	Terminal box	ZL 102
7	Stator	
8	Front cover	Cast iron
9	Outlet body	Cast iron/AISI 304
10	Mechanical seal	Carbon/Ceramic
11	Diffuser	AISI 304
12	Sleeve	AISI 304
13	Impeller	AISI 304
14	Pump body	Cast iron/AISI 304



Package Information

Model	GW (Kgs)	L (mm)	W (mm)	H (mm)	Quantity (PCS/20 TEU)
ECH(m)4-20(S)	13.1	420	215	243	1215
ECH(m)4-30(S)	13.6	420	215	243	1215
ECH(m)4-40(S)	14.7	455	215	243	1170
ECH(m)4-50(S)	21.5	548	235	268	800
ECH(m)4-60(S)	22	548	235	268	800



ECH

Stainless Steel Horizontal Multistage Pump



Application

- It is applicable to household water supply, equipment support, pipeline pressurization, garden watering, vegetable greenhouse watering, fish farming and poultry raising, industrial and mining, water supply and drainage of enterprises and high-rise buildings, central air conditioner and centralized heating circulation system, etc.

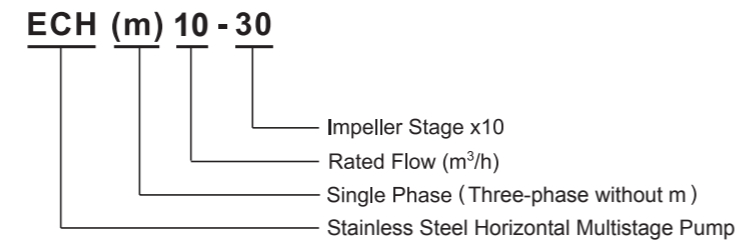
Pump

- AISI 304 shaft
- Max. liquid temperature: +85°C
- Altitude: up to 1000 m
- Max. suction: 8 m
- Max. inlet pressure: limited by max. operating pressure
- Max. operation pressure: 10 bar
- Liquid PH valve: 4 - 10

Motor

- Motor with copper winding
- Built-in thermal protector for single phase motor
- Insulation class: F
- Protection class: IP55
- Max. ambient temperature: +40°C

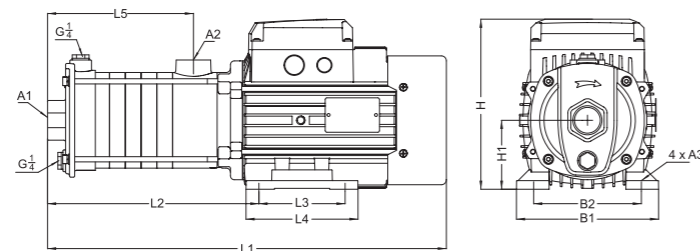
Identification Codes



Technical Data

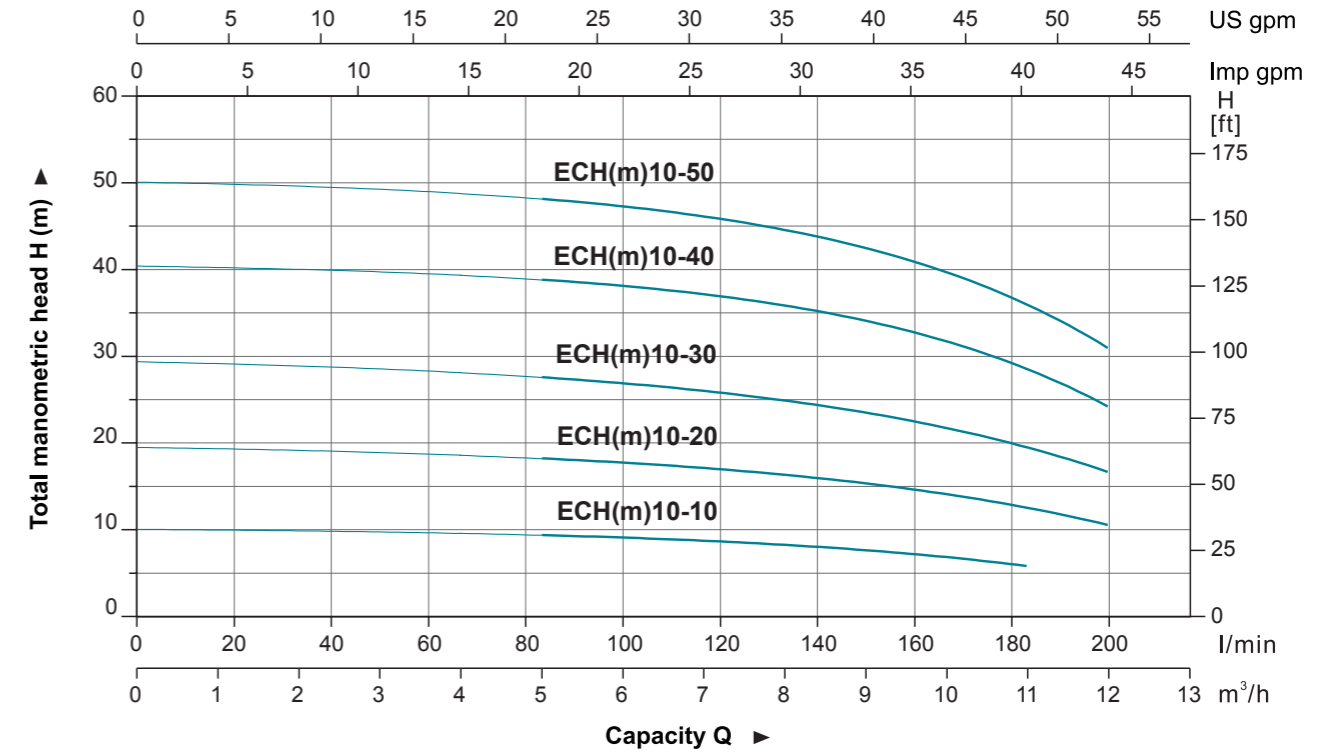
Model	Power		Q (m ³ /h) Q (l/min)	6	7	8	9	10	11	12
	kW	HP		H (m)	100	117	133	150	167	183
ECH(m)10-10	0.75	1.0	H (m)	9.1	8.7	8.2	7.7	6.8	5.8	-
ECH(m)10-20				17.9	17.1	16.3	15.3	14.0	12.5	10.6
ECH(m)10-30	1.1	1.5		27.1	26.3	24.9	23.4	21.4	19.3	16.9
ECH(m)10-40	1.5	2.0		38.6	37.6	35.9	33.9	31.2	28.2	24.6
ECH(m)10-50	2.2	3.0		47.8	46.4	44.4	42.2	39.5	35.9	31.1

Dimension



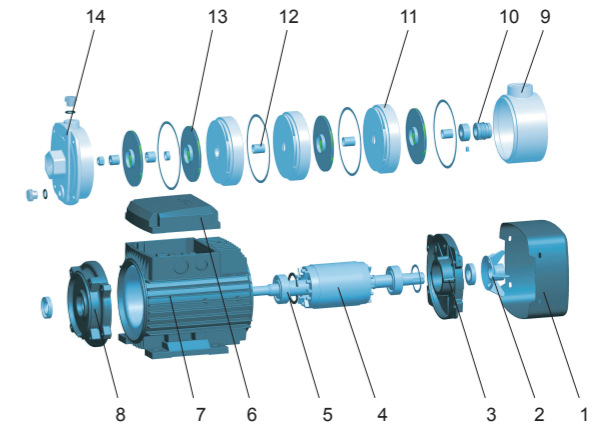
Model	L1	L2	L3	L4	L5	B1	B2	H	H1	A1	A2	A3
ECH(m)10-10	430	212	100	130	121	165	125	204.5	80	G1 1/2	G1 1/4	Φ10
ECH(m)10-20	430	212	100	130	121	165	125	204.5	80	G1 1/2	G1 1/4	Φ10
ECH(m)10-30	460.5	242.5	100	130	151.5	165	125	504.5	80	G1 1/2	G1 1/4	Φ10
ECH(m)10-40	549.5	261.5	125	150	182	180	140	217.5	90	G1 1/2	G1 1/4	Φ10
ECH(m)10-50	579.5	291.5	125	150	212	180	140	217.5	90	G1 1/2	G1 1/4	Φ10

Hydraulic Performance Curves



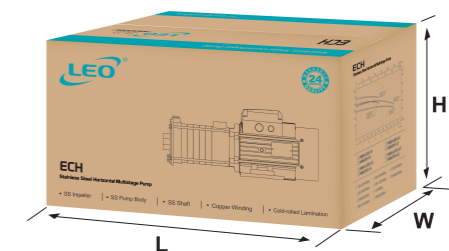
Materials Table

No.	Part	Material
1	Fan cover	08F
2	Fan	PP
3	Rear cover	ZL 102
4	Rotor	
5	Bearing	
6	Terminal box	ZL 102
7	Stator	
8	Front cover	Cast iron
9	Outlet body	Cast iron
10	Mechanical seal	Carbon/Ceramic
11	Diffuser	AISI 304
12	Sleeve	AISI 304
13	Impeller	AISI 304
14	Pump body	Cast iron



Package Information

Model	GW (Kgs)	L (mm)	W (mm)	H (mm)	Quantity (PCS/20 TEU)
ECH(m)10-10	20.7	503	235	268	856
ECH(m)10-20	20.8	503	235	268	856
ECH(m)10-30	21.9	503	235	268	856
ECH(m)10-40	28.2	618	245	283	653
ECH(m)10-50	30.6	618	245	283	653



ECH

Stainless Steel Horizontal Multistage Pump



Application

- It is applicable to household water supply, equipment support, pipeline pressurization, garden watering, vegetable greenhouse watering, fish farming and poultry raising, industrial and mining, water supply and drainage of enterprises and high-rise buildings, central air conditioner and centralized heating circulation system, etc.

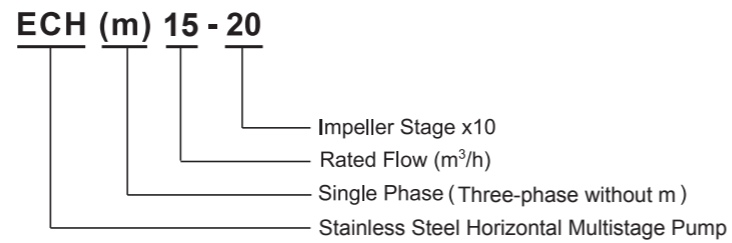
Pump

- AISI 304 shaft
- Max. liquid temperature: +85°C
- Altitude: up to 1000 m
- Max. suction: 8 m
- Max. inlet pressure: limited by max. operating pressure
- Max. operation pressure: 10 bar
- Liquid PH valve: 4 - 10

Motor

- Motor with copper winding
- Built-in thermal protector for single phase motor
- Insulation class: F
- Protection class: IP55
- Max. ambient temperature: +40°C

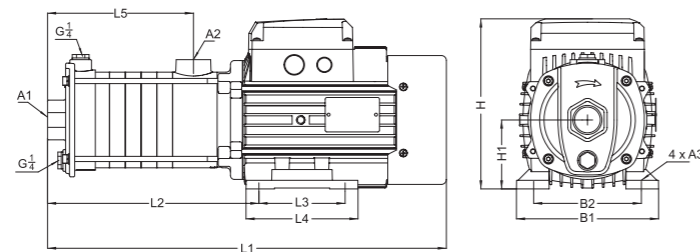
Identification Codes



Technical Data

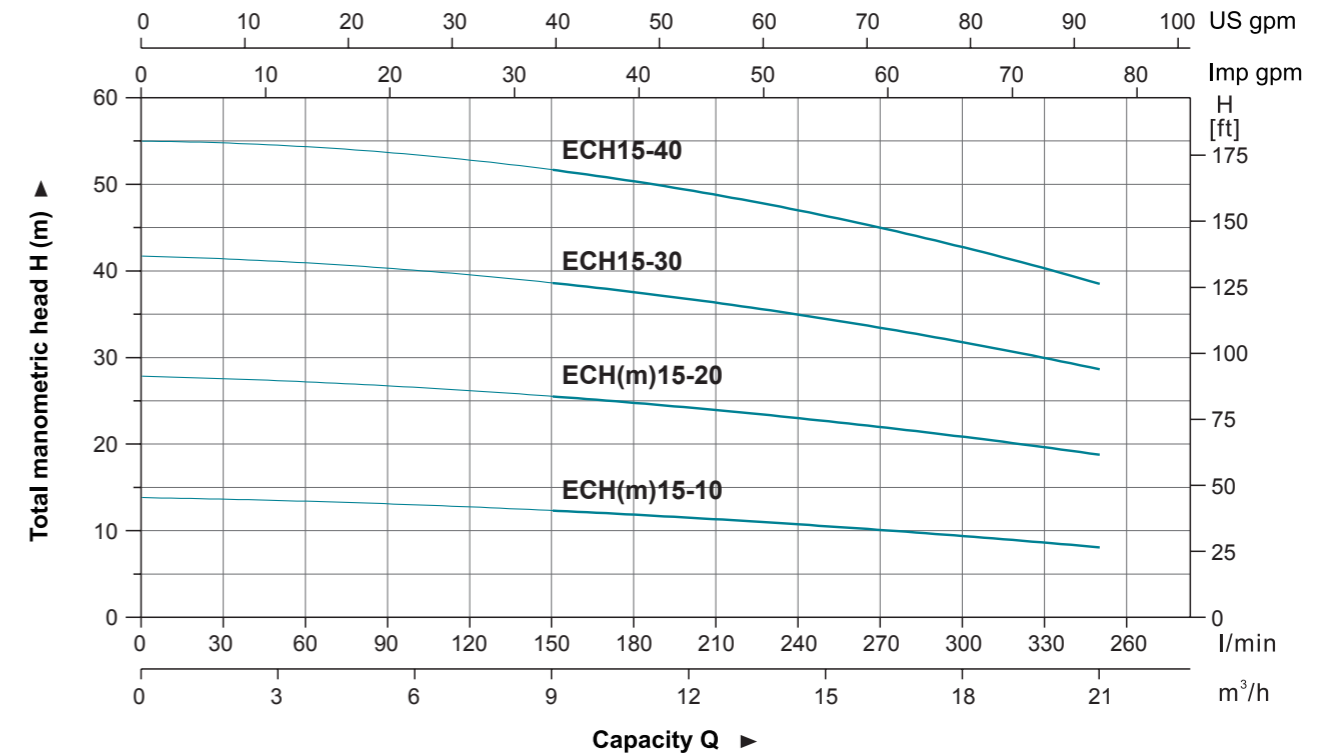
Model	Power		Q (m³/h)	9	12	15	18	21
	kW	HP						
ECH(m)15-10	1.1	1.5	H (m)	12.4	11.6	10.6	9.4	8.2
ECH(m)15-20	2.2	3		25.6	24.1	22.7	21.1	18.8
ECH15-30	3.0	4		38.7	36.9	34.9	31.9	28.5
ECH15-40	4.0	5.5		51.8	49.7	46.8	42.9	38.3
				Q (l/min)	150	200	250	300

Dimension



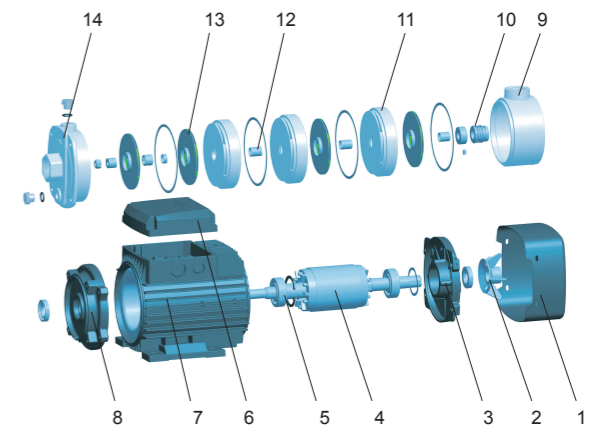
Model	L1	L2	L3	L4	L5	B1	B2	H	H1	A1	A2	A3
ECH(m)15-10	451	233.5	100	130	139.5	165	125	204.5	80	G2	G2	Φ10
ECH(m)15-20	510	222	125	150	139.5	180	140	217.5	90	G2	G2	Φ10
ECH15-30	560	272	125	150	189.5	180	140	247.5	90	G2	G2	Φ10
ECH15-40	616	336.5	140	180	230	205	160	224.5	100	G2	G2	Φ12

Hydraulic Performance Curves



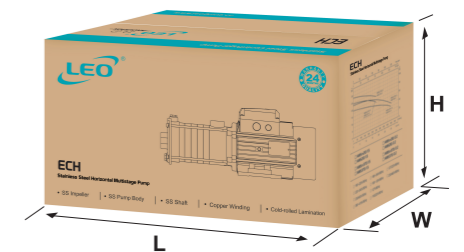
Materials Table

No.	Part	Material
1	Fan cover	08F
2	Fan	PP
3	Rear cover	ZL 102
4	Rotor	
5	Bearing	
6	Terminal box	ZL 102
7	Stator	
8	Front cover	Cast iron
9	Outlet body	Cast iron
10	Mechanical seal	Carbon/Ceramic
11	Diffuser	AISI 304
12	Sleeve	AISI 304
13	Impeller	AISI 304
14	Pump body	Cast iron



Package Information

Model	GW (Kgs)	L (mm)	W (mm)	H (mm)	Quantity (PCS/20 TEU)
ECH(m)15-10	22.7	503	235	268	856
ECH(m)15-20	30.3	557	245	283	659
ECH15-30	32.2	618	245	283	620
ECH15-40	39.6	687	245	290	504



ECH

Stainless Steel Horizontal Multistage Pump



Application

- It is applicable to household water supply, equipment support, pipeline pressurization, garden watering, vegetable greenhouse watering, fish farming and poultry raising, industrial and mining, water supply and drainage of enterprises and high-rise buildings, central air conditioner and centralized heating circulation system, etc.

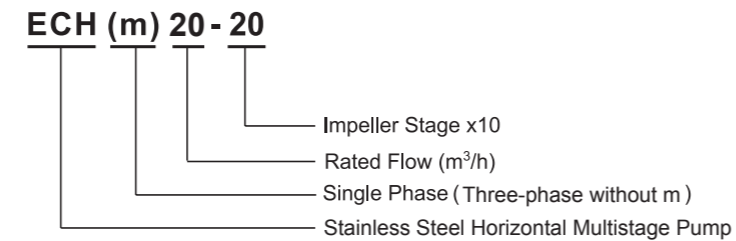
Pump

- AISI 304 shaft
- Max. liquid temperature: +85°C
- Altitude: up to 1000 m
- Max. suction: 8 m
- Max. inlet pressure: limited by max. operating pressure
- Max. operation pressure: 10 bar
- Liquid PH valve: 4 - 10

Motor

- Motor with copper winding
- Built-in thermal protector for single phase motor
- Insulation class: F
- Protection class: IP55
- Max. ambient temperature: +40°C

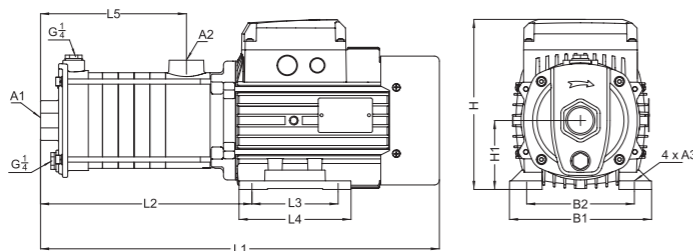
Identification Codes



Technical Data

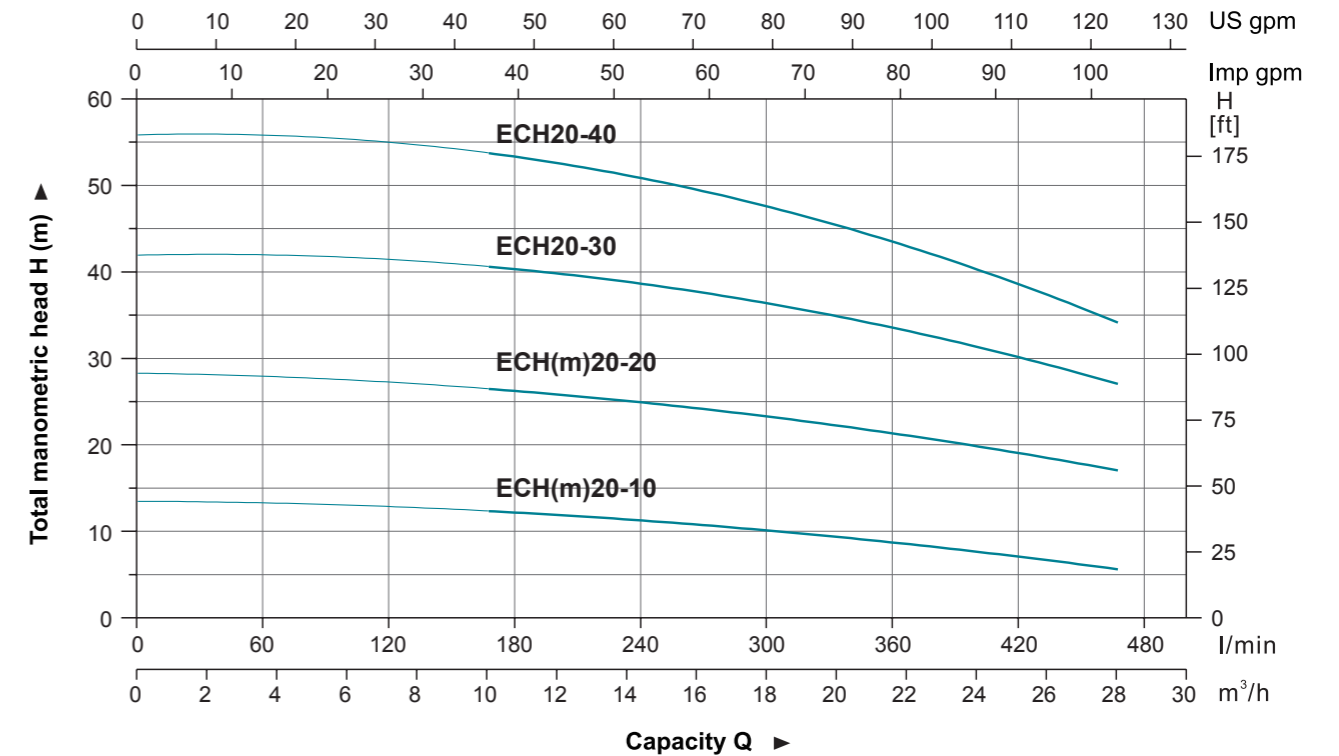
Model	Power		Q (m ³ /h)	12	16	20	24	28
	kW	HP						
ECH(m)20-10	1.1	1.5	H (m)	12.1	10.8	9.5	7.8	5.7
ECH(m)20-20	2.2	3		26.1	24.4	22.4	19.8	17.2
ECH20-30	4.0	5.5		39.9	38.0	35.5	31.4	26.9
ECH20-40				52.7	50.1	45.9	40.3	34.0

Dimension



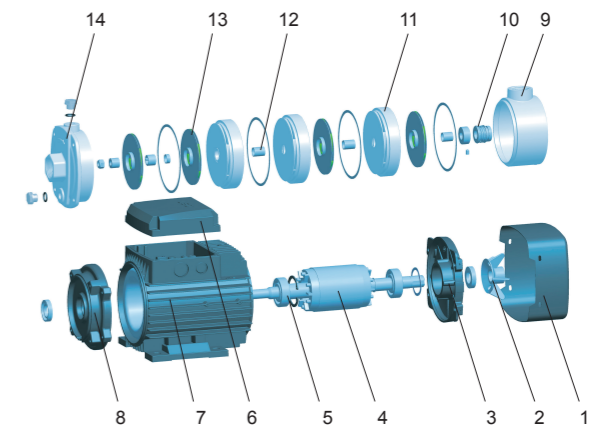
Model	L1	L2	L3	L4	L5	B1	B2	H	H1	A1	A2	A3
ECH(m)20-10	451	233.5	100	130	139.5	165	125	204.5	80	G2	G2	Φ10
ECH(m)20-20	510	222	125	150	139.5	180	140	217.5	90	G2	G2	Φ10
ECH20-30	570.5	291	140	180	184.5	205	160	224.5	100	G2	G2	Φ12
ECH20-40	616	336.5	140	180	230	205	160	224.5	100	G2	G2	Φ12

Hydraulic Performance Curves



Materials Table

No.	Part	Material
1	Fan cover	08F
2	Fan	PP
3	Rear cover	ZL 102
4	Rotor	
5	Bearing	
6	Terminal box	ZL 102
7	Stator	
8	Front cover	Cast iron
9	Outlet body	Cast iron
10	Mechanical seal	Carbon/Ceramic
11	Diffuser	AISI 304
12	Sleeve	AISI 304
13	Impeller	AISI 304
14	Pump body	Cast iron



Package Information

Model	GW (Kgs)	L (mm)	W (mm)	H (mm)	Quantity (PCS/20 TEU)
ECH(m)20-10	22.7	503	235	268	856
ECH(m)20-20	30.3	557	245	283	659
ECH20-30	38.9	687	245	290	513
ECH20-40	39.4	687	245	290	504

